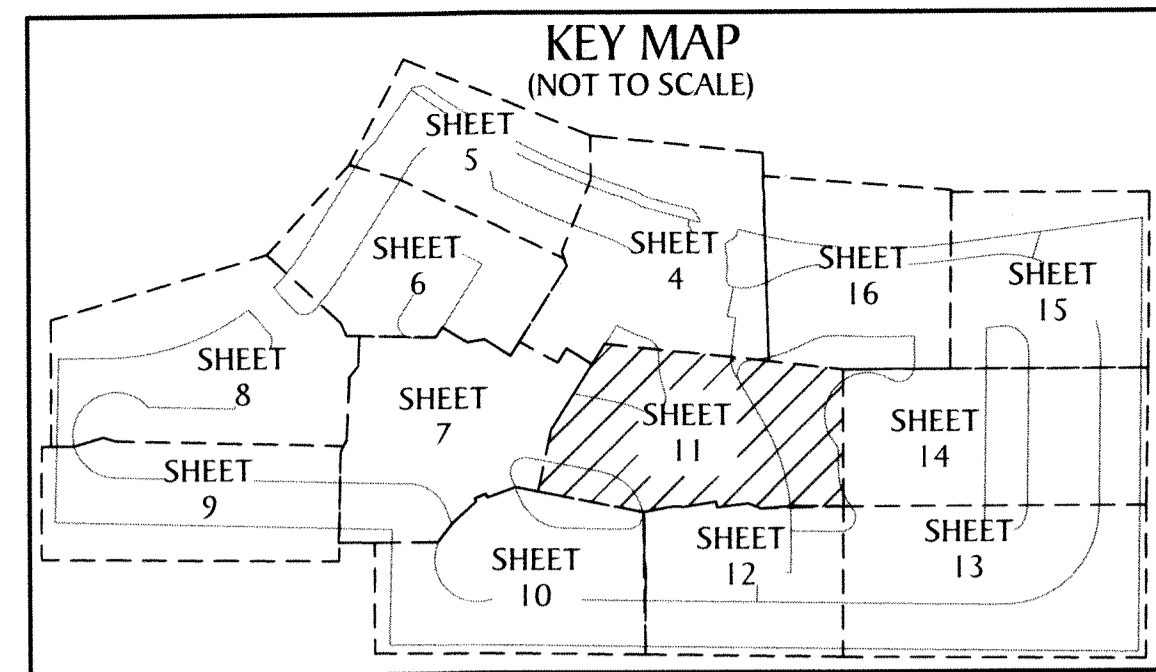
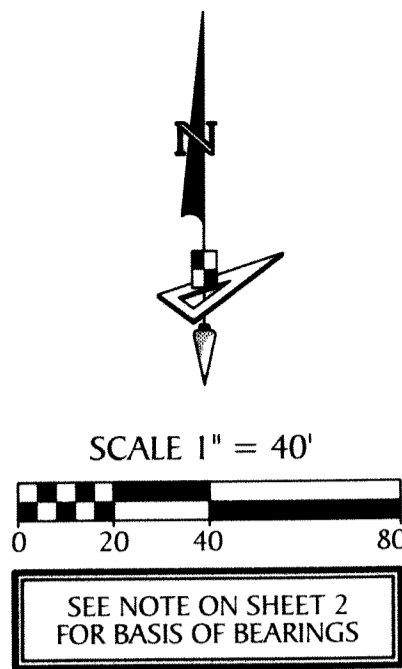
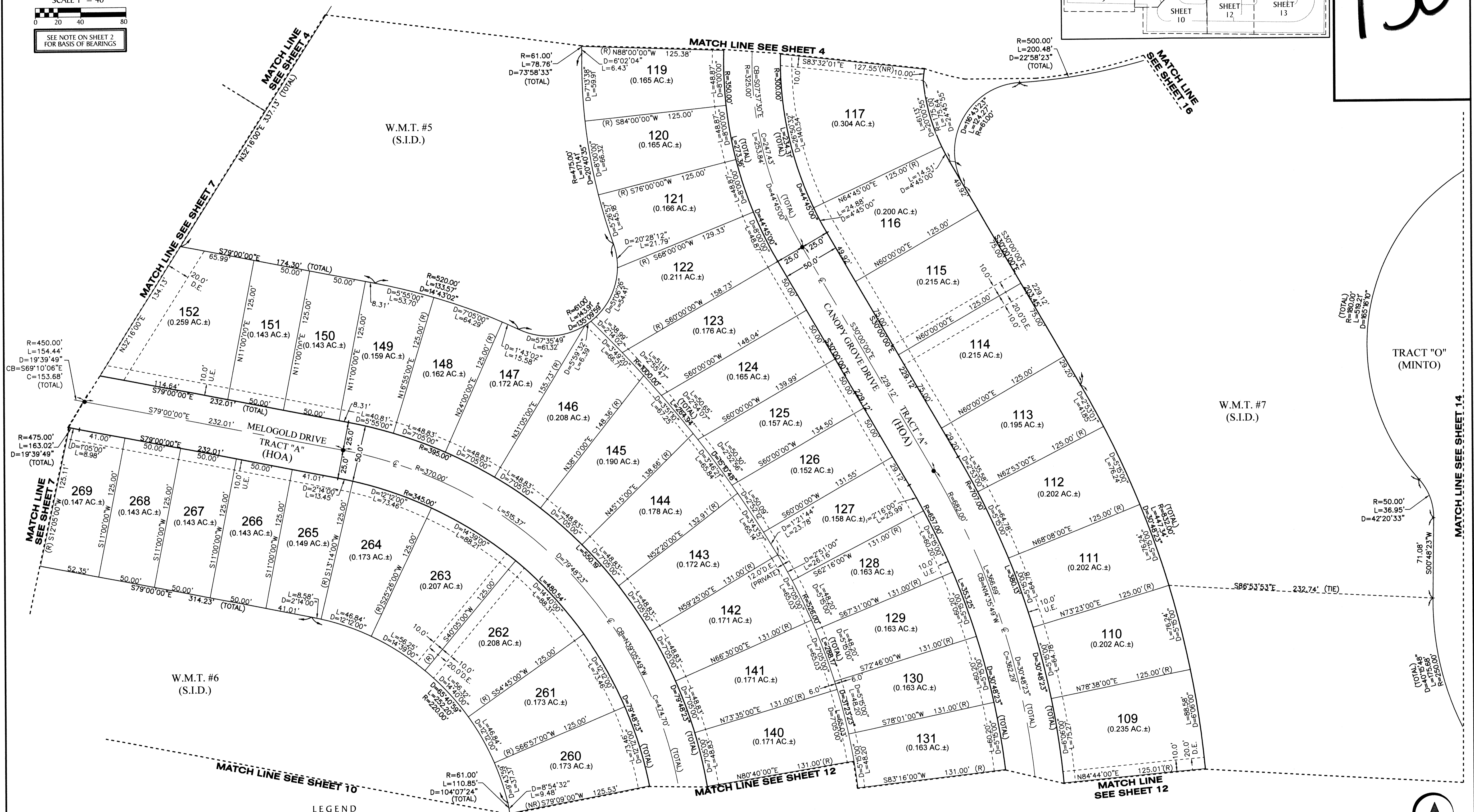


# GROVES OF WESTLAKE - PHASE I

BEING IN PART A REPLAT OF OPEN SPACE TRACT #4 AND OPEN SPACE TRACT #5, PERSIMMON BOULEVARD EAST - PLAT 2, PLAT BOOK 128, PAGES 16 THROUGH 19, INCLUSIVE, PUBLIC RECORDS OF PALM BEACH COUNTY, FLORIDA, AND BEING A PORTION OF SECTION 7, TOWNSHIP 43 SOUTH, RANGE 41 EAST AND SECTION 12, TOWNSHIP 43 SOUTH, RANGE 40 EAST, CITY OF WESTLAKE, PALM BEACH COUNTY, FLORIDA,



130



LEGEND	
P.O.B. --- POINT OF BEGINNING	U.E. --- UTILITY EASEMENT
P.O.C. --- POINT OF COMMENCEMENT	D.E. --- DRAINAGE EASEMENT
P.B. --- PLAT BOOK	L.M.A.E. --- LAKE MAINTENANCE ACCESS EASEMENT
D.B. --- DEED BOOK	R.P.E. --- RURAL PARKWAY EASEMENT
PG./PG(s) --- PAGE(S)	7-43-41 --- SECTION-TOWNSHIP-RANGE
NAD --- NORTH AMERICAN DATUM	R --- RADIUS
W.M.T. --- WATER MANAGEMENT TRACT	L --- ARC LENGTH
O.S.T. --- OPEN SPACE TRACT	D --- DELTA ANGLE
P.B.C. --- PALM BEACH COUNTY	
CB --- CHORD BEARING	C --- CHORD
R/W --- RIGHT-OF-WAY	℄ --- CENTER LINE OF ROAD
℄ --- CENTER LINE OF ROAD	(R) --- RADIAL
(NR) --- NON-RADIAL	(NR) --- NON-RADIAL
PRM --- PERMANENT REFERENCE MONUMENT	PRM --- PERMANENT REFERENCE MONUMENT
● --- PERMANENT CONTROL POINT	○ --- FOUND PERMANENT REFERENCE MONUMENT
○ --- FOUND PERMANENT REFERENCE MONUMENT	■ --- SET 4"x4" CONCRETE MONUMENT WITH 2" ALUMINUM DISK STAMPED "PRM LB 7768"

**GeoPoint Surveying, Inc.**

4152 W. Blue Heron Blvd. Suite 103  
Riviera Beach, FL 33404

Phone: (561) 444-2720  
www.geopointsurvey.com  
Licensed Business Number LB 7768

Sheet No. 11 of 16 Sheets